

HEATHER MOUNTAIN LODGE

~ High Mountain Hospitality

WEDDING AND FUNCTION PLANNER 2010

Heather Mountain Lodge offers unparalleled High Mountain Hospitality surrounded by the rugged beauty of Glacier National Park. Built in 1996 from locally sourced massive birch and larch timbers, the post & beam lodge offers contemporary comfort in the midst of an exquisite mountain setting.

Heather Mountain Lodge is ideal to meet the needs of small groups (up to 90 people). The lodge has 23 rooms that can accommodate up to 90 guests. All rooms feature down duvets, Canadian mountain themed decor and Spectacular Mountain views. Our room rate is \$125.00 per night plus taxes based on double occupancy.

Savor outstanding mountain-inspired cuisine in our BisonBerry Bistro overlooking the peaks of Glacier National Park, or enjoy a martini in the Woolly Toque Lounge.

Entertainment consists of hiking Glacier National Park, a game of billiards, friendly conversation around the fireplace, or a soak in our outdoor hot tub.

Heather Mountain Lodge is perfectly situated for guests looking for accessibility but want a remote mountain retreat, excellent cuisine and attentive staff. The intimate nature of Heather Mountain Lodge enables functions to rent the entire lodge and property for their exclusive engagement. Exclusive use of the lodge, lounge and hotel at no additional cost when all 23 rooms are rented.

Included you will find, our Wedding and Function Planner complete with room descriptions, rentals, and menus to help you plan your special day. Our wine list & vegetarian alternatives are available upon request. If you require additional information, please feel free to contact us directly.

We look forward to hosting your function at Heather Mountain Lodge!



P.O. Box 401, Golden BC, V0A 1H0
Tel: 250.344.7490 Fax: 1.888.543.1096 E-mail: info@heathermountainlodge.com

"Oh my god, I loved Heather Mountain Lodge!! Great beds, great room, great bathroom, great food, close to the highway but quiet, so nice to not be in a city. Need I say more!"

ACCOMMODATION

Heather Mountain Lodge is able to accommodate up to 90 guests in 23 guest rooms. All of our rooms have two queen beds with down duvets, private bath, telephone and magnificent mountain views of the Alder Creek Valley. Rooms can have a maximum number of 4 people and are all non-smoking. All of our rooms have been recently out fitted with flat screen TV's with satellite.

ACCOMMODATION RESERVATION PROCEDURES

Accommodations for Functions or Weddings are booked either through a rooming list or by guests contacting Heather Mountain Lodge directly at 1866-344-7490.

The contracted room block will be held 30 days prior to the event; any rooms not reserved by this time will be released. Availability and rate will not be guaranteed past this date. Guest rooms not reserved, which have been contracted, will be charged to the lessee's master account, if not released after the 30 days prior.

FUNCTION FACILITIES

	Dimensions	Boardroom	Reception	Banquet
Glacier Dining Room	38"x32"	40	90	80
Wooly Toque Lounge	21"x24"	20	30	20

The Glacier Dining Room consists of rectangular tables. The Wooly Toque Lounge consists of square or rectangular tables. Available table dimensions can vary according to function requirements.

AUDIO VISUAL RENTAL FEES

TV Monitor	\$30	8' Screen	\$25
VCR (VHS)	\$35	Digital Projector	\$40
DVD Player	\$35		

All above equipment is available in-house. All prices are subject to change without notice. Please add taxes to quoted prices. Prices are for one day. Please note that Heather Mountain Lodge does not have audio equipment (such as speakers and microphones etc.) appropriate for reception speeches or dances. Please refer to the Resources list for contact information should you require these services.



Other Accommodation Options

Heather Mountain Lodge offers 23 guest rooms that can accommodate up to 90 persons. If you require additional accommodation here are some different options for you.

Kicking Horse River Chalets

info@kickinghorseriverchalets.com

1-866-371-6552

Located approximately 20 minutes from Heather Mountain Lodge

Great Canadian Chalets

info@greatcanadianchalets.com

1250-344-7878

Located approximately 25 minutes from Heather Mountain Lodge



Kinbasket Lake Resort

strongsd@gte.net

1250-344-1270

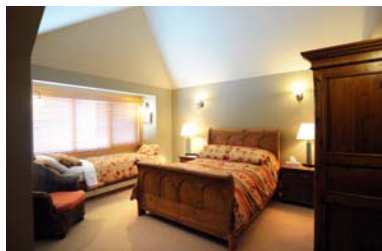
Located approximately 15 minutes from Heather Mountain Lodge

Vagabond Lodge

info@vagabondlodge.ca

1-866-944-2622

Located approximately 1 hour from Heather Mountain Lodge



Glacier Park Lodge

info@glacierparklodge.ca

1 250 837-2126

Located approximately 15 minutes west of Heather Mountain Lodge

"The food was unbelievably good! I loved the down comforters and the hospitality you all extend"



P.O. Box 401, Golden BC, V0A 1H0

Tel: 250.344.7490 Fax: 1.888.543.1096 E-mail: info@heathermountainlodge.com

Ceremony Location Options

When all 23 rooms are rented you will have exclusive use of the lodge in its entirety for no additional charge.

Heather Mountain Lodge
info@heathermountainlodge.com
1250-344-7490



Kicking Horse Mountain Resort
sales@kickinghorseresort.com
1.866.SKI.KICK



"The surrounding scenery and the obvious effort spent in maintaining your buildings etc"



P.O. Box 401, Golden BC, V0A 1H0
Tel: 250.344.7490 Fax: 1.888.543.1096 E-mail: info@heathermountainlodge.com

BREAKFAST BUFFET – SAMPLE

CONTINENTAL

\$10.00 per person

Freshly Brewed Coffee or Tea
Selection of Juices and Milk
Fresh Fruit Salad
Croissants and/or Danishes and/or Muffins
Fresh Bread
Assorted Cereals and Yogurt

HOT BUFFET ITEMS

Add \$7.00 per person

Minimum 20 people

An assortment of:

- Egg dish (vegetable scrambled, sunny side up etc...)
- two breakfast meats (bacon, sausage, ham, or corned beef)
 - baby roasted potatoes
 - all continental selections

Add on:

Traditional Eggs Benedict - \$4
Vegetable Egg Benedict - \$4
Smoked Salmon Egg Benedict - \$4
Whole ham carvery - \$7
Leg of Lamb carvery - \$10



P.O. Box 401, Golden BC, V0A 1H0
Tel: 250.344.7490 Fax: 1.888.543.1096 E-mail: info@heathermountainlodge.com

LUNCH BUFFET – SAMPLE

FINGER SANDWICH BUFFET

\$15 .00 per person

Soup of the Day
Fresh Vegetables and Dip

Sandwich Selection

Black Forest Ham, Chicken Salad,
Egg Salad, Tuna Salad,
Vegetarian & Cheese

Assorted Desserts
Coffee or Tea

GOURMET SANDWICH BUFFET

\$17.00 per person

Soup of the Day
Mixed Greens
Pasta Salad

Sandwich Selection

Black Forest Ham, Chicken Salad,
Egg Salad, Tuna Salad,
Smoked Turkey & Cranberry,
Vegetarian & Cheese, Cucumber & Brie

Assorted Desserts
Coffee or Tea



“My room was immaculate and wonderfully cool despite the warm weather - and yet no horrible air-conditioning. I was really impressed by that.”



P.O. Box 401, Golden BC, V0A 1H0
Tel: 250.344.7490 Fax: 1.888.543.1096 E-mail: info@heathermountainlodge.com

"The staff are cordial and show, care and concern. We were biking across the continent, and were about the end of our ropes that hot day, and your lodge was at the top of the hill. Your folks treated us like we were kings!! Thanks soooo much for an enjoyable night's stay!! They made it so accommodating for us."

LUNCH SELECTIONS – SAMPLE

Price of entrée includes Soup or Salad, Dessert, Coffee or Tea. Groups are to select a set meal from the following menus. If additional options or choices are required our Chef will be happy to assist you.

SOUPS

Tomato Gin
Cream of Wild Mushroom
Cream of Leek and Potato
Curried Butternut Squash

SALADS

Caesar Salad with Asiago Cheese
Mixed Baby Greens with Lodge Vinaigrette

MAIN COURSES

Grilled Pepper Salmon on mixed greens with Raspberry Vinaigrette	\$ 22
Linguini with Chicken Breast, Tomato, Mushroom & Spinach Cream Sauce	\$ 20
6 oz. New York Steak on Fresh Bun, served with fried potatoes	\$ 25
Buffalo Burger with Oka Cheese and bacon, served with fried potatoes	\$ 20
Smoke Salmon, Cream Cheese and Capers on a Fresh Bagel	\$ 18
Vegetarian Alternative (available upon request)	

DESSERTS

Carrot Cake
Trio of lodge made Ice Cream or Sorbet with Biscotti
Fresh Fruit and Berries Plate
New York Cheesecake with Raspberry Compote



P.O. Box 401, Golden BC, V0A 1H0
Tel: 250.344.7490 Fax: 1.888.543.1096 E-mail: info@heathermountainlodge.com

DINNER BUFFET – SAMPLE

All prices listed below are per person and do not include tax or service fees

Minimum 30 people

All Dinner Buffets selections include

Fresh Breads and butter
Assorted olive and pickle tray

~

Salad
Choice of two

Caesar Salad
Mixed Garden Greens
Roasted Potato Salad
Italian Pasta Salad
Greek Salad

~

Herb Garlic Mashed Potatoes

~

Garden Fresh Vegetables
Choice of three

Bacon wrapped green beans
Stuffed zucchini
Roasted mushrooms
Spaghetti squash
Assorted grilled vegetables

~

Buffet Condiments
Assortment of:

Mustard
Horseradish
Roasted garlic
Fresh herbs
Assorted seasonings

Meat Carvery Buffet

Your choice of:

Top Round - \$35
Prime rib - \$40
Roasted NY - \$45

~

Yorkshire Puddings



Fish/Chicken Buffet
Grilled Salmon - \$36 per person
Grilled Chicken - \$35 per person

Traditional Holiday Dinner Buffet
\$38

Hazelnut Sage Stuffing
~
Fresh Roast Turkey
~
Traditional Holiday Vegetables
~
Turkey au jus Sauce

Add on
Roast Lamb and au jus - \$9

Pasta Buffet
\$38

Two types of pasta
~
Two types of Sauce
~
Roast & Grilled Meats
~
Garlic Toast
~
Pasta Condiments



P.O. Box 401, Golden BC, V0A 1H0
Tel: 250.344.7490 Fax: 1.888.543.1096 E-mail: info@heathermountainlodge.com

PLATED DINNER SELECTIONS – SAMPLE

Price of entrée includes Soup or Salad, Dessert, Coffee or Tea. Groups are to select a set meal from the below menus. A selection of appetizers is listed for a fourth course at added costs. All entrées are served with seasonal vegetables. If additional options or choices are required our Chef will be happy to assist you. If you are choosing a plated meal please limit your options to 2 different plated entrees as well as appetizer options.

SOUPS

Tomato Gin
Cream of Wild Mushroom
Cream of Leek and Potato
Curried Butternut Squash

SALADS

Rice Paper Salad Rolls over Organic Greens and Peanut Vinaigrette
Caesar Salad with Asiago Cheese
Smoked Buffalo on Organic Greens and Raspberry Vinaigrette

MAIN COURSES

Pistachio Crusted Halibut with a Coconut Cream Sauce and Basmati Rice	\$38
Ginger Sesame Salmon over Wild Rice	\$38
Free Range Chicken Breast with Saskatoon Berry Sauce and Baby Potatoes	\$36
Maple Bacon wrapped Buffalo Tenderloin with a Peppercorn Jus and Garlic Mashed Potato	\$46
Rack of Lamb with Dijon Herb Crust and New Red Potatoes	\$40
Roast Prime Rib with a Red Wine Sauce over Roasted Potatoes	\$42
Vegetarian Alternative (prices available upon request)	

DESSERTS

Chocolate Hazelnut Daquoise
Crème Brulee with Biscotti
Trio of lodge made Ice Cream or Sorbet with Biscotti
Caramelized Horn with Fruits, Berries and Cream
New York Cheesecake with a Raspberry Compote



P.O. Box 401, Golden BC, V0A 1H0
Tel: 250.344.7490 Fax: 1.888.543.1096 E-mail: info@heathermountainlodge.com

HORS D'OEUVRES, COCKTAIL & RECEPTION SNACKS – SAMPLE

HOT

\$25 per dozen

Fresh Herb & Garlic Steamed Mussels
Coconut Curry Chicken Satays
Thai Vegetable Spring Rolls
Honey & Garlic or Cajun Style Chicken Wings
Assorted Gourmet mini Quiches

COLD

\$20 per dozen

Tiger Prawn Pyramid
Prosciutto and Melon

DESSERTS

\$30 per dozen

Chocolate Truffles
Chocolate Dipped Strawberries

PLATTERS & TRAYS

Assorted Cheese Tray with Baguette and Crackers (serves approximately 15 pax)	\$ 45.00
Assorted Cold Cuts Meat Platter with Baguette and Crackers (serves approximately 15 pax)	\$ 50.00
Fresh Vegetable Platter with Dip (serves approximately 25 pax)	\$ 35.00
Fresh Fruit Platter with Yogurt Dip (serves approximately 25 pax)	\$ 35.00
Hospitality Tray with Pretzels, Peanuts, Potato Chips, Nachos & Dips (serves approximately 25 pax)	\$ 35.00
Assorted Pastries and Cookies Tray (serves approximately 15 pax)	\$ 60.00

**** Please note that there may be some changes to prices and options on all menu items, depending on the season. Heather Mountain Lodge kitchen staff will ensure that you are informed of these changes well before the function****



P.O. Box 401, Golden BC, V0A 1H0
Tel: 250.344.7490 Fax: 1.888.543.1096 E-mail: info@heathermountainlodge.com

BEVERAGE SERVICE - SAMPLES

A bar can be set up as either a host (open) or on a cash bar basis.

The lodge provides bartenders, service staff, and glasses.

All food and beverages must be supplied by Heather Mountain Lodge.

There is a \$150.00 set up fee for a cash bar.

Premium Bar Liquor (1 oz. / 28.4 ml)	\$5.50 - \$65.00
Beer (per bottle)	
Domestic	\$6.00
Import	\$7.50
House Wine	\$7.00-\$10.00 per glass
Liqueurs (1 oz. / 28.4 ml)	\$5.00
Premium Liqueurs (1 oz. / 28.4 ml)	\$8.00
Soft Drinks (by the glass)	
Pop	\$2.00
Juice, Ice Tea	\$2.50
Coffee, Tea	\$2.50
Mineral Water	\$2.75

Our wine list is available upon request. Wine pricing starts at \$25.00 per bottle plus gratuities and taxes. Sparkling wine starts at \$30.00 per bottle and Champagne at \$100.00 per bottle plus gratuities and taxes.

Due to health and liquor regulations, Heather Mountain Lodge will be the sole supplier of all food and beverage items and corkage is not permitted. Wine list availability and pricing are subject to change.

All prices are current and subject to change

All food and beverage prices are subject to 15% service fee and other applicable taxes

All alcoholic beverages are subject to a 10% Liquor Tax



P.O. Box 401, Golden BC, V0A 1H0

Tel: 250.344.7490 Fax: 1.888.543.1096 E-mail: info@heathermountainlodge.com

HEATHER MOUNTAIN LODGE DRIVING DIRECTIONS

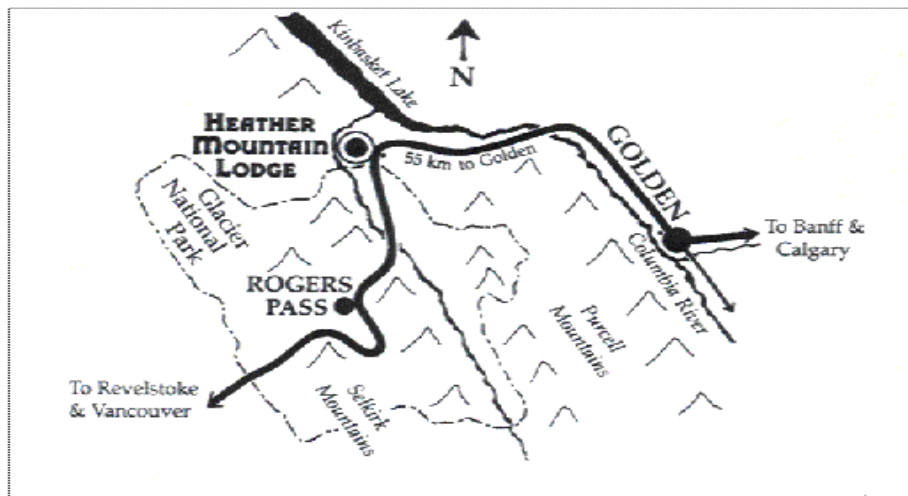
FROM CALGARY:

Heather Mountain Lodge is located approximately 300 km (180 miles) from Calgary, Alberta. To reach the lodge, leave via 16th Avenue heading west. This route turns into the Trans Canada Highway #1 – which you will follow directly to Golden, British Columbia. 55 km (33 miles) past the town of Golden you will see a turn off to the right with signage for Heather Mountain Lodge. The lodge is located just off Trans Canada Highway #1. If you enter Glacier National Park you have gone to far.

FROM VANCOUVER:

If you are at the Vancouver Airport you will want to go south on Highway 99 towards Tsawwassen (Ferry Dock). Exit onto Highway 10, which will be labeled as a direction to reach Hope. After the town of Langley, Highway 10 will join the Trans Canada Highway #1, which will take you east to Hope. At Hope it is best to leave the Trans Canada Highway #1 and take the Coquihalla Highway as it is shorter. The Coquihalla will take you to Kamloops where you will rejoin the Trans Canada Highway #1 heading west. Follow this highway all the way past Revelstoke and through Glacier National Park. 93 km past Revelstoke there is a turn off to the left with signage for Heather Mountain Lodge. The lodge is located just off Trans Canada Highway #1. Beware, if you come to the town of Golden you have gone 55 km (33 miles) past the lodge. Please keep in mind that Heather Mountain Lodge is approximately 700 km (420 miles) from Vancouver, much of which is through mountain terrain that may necessitate slower driving.

We look forward to your visit and hope your stay will be memorable and enjoyable.



P.O. Box 401, Golden BC, V0A 1H0
Tel: 250.344.7490 Fax: 1.888.543.1096 E-mail: info@heathermountainlodge.com

RESOURCES AND REFERENCE INFORMATION

MARRIAGE COMMISSIONER:

Alice Pallard
250.344.2378

PLACES OF WORSHIP:

Rocky Mountain Christian Fellowship
250.344.2456

Kingdom Hall of Jehovah's Witness
250.344.6164

Golden Anglican Church
250.344.6113

Trinity Lutheran Church
250.344.2935

Golden Baptist Church
250.344.7676

Golden Pentecostal Tabernacle
250.344.2459

Catholic Church of Sacred Heart
250.344.6328

Golden Seventh-Day Adventist
250.344.5718

Church of Jesus Christ of Latter Day
Saints
250.344-5343

St. Andrews United Church
250.344.6117

Golden Sikh Temple
250.344.2965

WEDDING CAKE:

Janice LaRoy
250.344.6562

Cakes by Cheryl
250.344.5760

PHOTOGRAPHER:

Jamie Schrauwen
250.306.9633

Claire Dibble
1250.290.0201
claire@dibblephotography.com

Bruno Long
1250.837.4013

VIDEOGRAPHER

Cliff Markham
250-344-3929 Business
250-439-8030 Cell

CEREMONY MUSICIANS:

Music Mosaic (Pianist, duo or trio)
Sue Gould
250.344.7112

DISK JOCKEYS:

Robert Gibson
250.837.5819

Elite Sound and Light
250.344.5354

HAIR STYLISTS:

Reflections Hair Studio
250.344.5766

Personal Touch Hair and Spa
250.344.6413



FUNCTION/WEDDING TERMS & CONDITIONS

1. We, the lessee named in the attached contract, do hereby release and hold harmless Heather Mountain Lodge (608867 B.C. Ltd.) from all responsibility for any loss, theft, damage, and/or destruction of any and all property that we, the lessee, may decide to move onto the premises of Heather Mountain Lodge (608867 B.C. Ltd.) for the period set out in the attached contract.

2. It is hereby understood and agreed that should use of the premise of Heather Mountain Lodge (608867 B.C. Ltd.) result in any loss, theft, or damage by the lessee or his/her guests, the lessee shall reimburse Heather Mountain Lodge (608867 B.C. Ltd.) for any and all costs incurred to replace and/or restore same to its original condition. These costs may be added to the final bill upon departure or separately billed afterwards.

3. All accounts to be paid in full upon check out.

4. All function requirements must be confirmed in writing 30 days prior to arrival. Should changes be required, the lodge reserves the right to change subsequent fees.

5. Rooms are booked at rack rate only and are based on double occupancy. There will be an additional charge of \$15 for any additional guest 12 years of age and older to a maximum of 4 people per room. Room rates are subject to taxes.

6. Room reservations must be confirmed thirty (30) days prior to the function. Any rooms not confirmed by this time will either be released (and availability will not be guaranteed) or the available rooms will be charged to the final bill (this guarantees that the Lodge in its entirety will be reserved for your function).

7. Heather Mountain Lodge check-in time is 4:00pm and check-out time is 11:00am. Alternate requests must be made to the Lodge prior to the event. If a wedding ceremony is scheduled before 5:00pm, it is strongly recommended that the immediate wedding party be registered in the hotel in the evening prior to the wedding.

8. Should damages occur in a function room or a guest room due to the negligence of members of the wedding group, an assessment of damages will be made. The couple will be notified and payment will be due upon the assessment.

9. Function space rental will be available complimentary if the party books the following minimum number of guestrooms:

Glacier Dining Room 20 rooms

Wooly Toque Lounge 10 rooms

If the party books all 23 guests rooms, the entire lodge and its property will be available complimentary for the exclusive use of the function.

10. The following function room rental is in effect (if the party does not book the above minimum guestrooms):

Glacier Dining Room \$1,500.00

Wooly Toque Lounge \$600.00



11. A \$1,000.00 (non-refundable) deposit is required at the time of booking to secure function space and the date of the event. The deposit shall be credited towards the final billing.

12. Due to health and liquor regulations, Heather Mountain Lodge will be the sole supplier of all food and beverage items for the Lessee's event. No food and/or beverage shall be brought into the function from any other supplier (with the exception of the wedding cake). If function guests do bring alcohol into Heather Mountain Lodge, management have the right to shut the function down and lock and close the lodge.

13. A bar can either be set up as host (open) or on a cash bar basis. Minimum sales for cash bar must be equal to or exceed \$150. If sales are less than \$150, a set up fee will be applied of the amount needed to equal \$150 in revenue. Last Call will be at 11:45pm unless an earlier time is requested. The function must be concluded by 12:00 midnight.

14. A guaranteed number of guests must be confirmed seventy-two (72) hours prior to the day of the event. Charges will be applied to the guaranteed number, or the actual number served, whichever is greater.

15. All Food and Beverage arrangements must be confirmed sixty (60) days prior to the event. If changes are made 60 days prior to your event a service charge of \$300.00 will be added to your final bill. A service fee of 15% will be added to all Food and Beverage Services. All prices are subject to taxes. Alcoholic beverages are subject to 10% liquor tax.

****Please note that all room charged meals and liquor of you and your guests are not included in the 15% service fee mentioned above, and all gratuities for these charges have to be made at the front desk or upon signing your meal bill.****

16. Heather Mountain Lodge shall not be responsible for any and all damages to or loss of any article left in the hotel prior to, during, or following any function by the customer or his/her guests.

17. If the function is cancelled, the deposit is 100% non-refundable.

18. All additional services requested by you and provided by the Lodge shall be provided in writing and charged to the Master Account, unless otherwise stated in the contract. i.e. decorating dinning room, cake, cleaning up decorations after function.





Wedding Check List

To assist in making your wedding all that you would want it to be.

Wedding Date: _____

Deposit Date: _____

Menu Selection Deadline Date: _____

Rooming List Deadline Date: _____

Third Party Insurance Purchased? _____

Wine Selections

White: _____ Number of Bottles: _____

Red: _____ Number of Bottles: _____

How would you like to run your bar?

Cash Bar: _____

Open Bar: _____

What are your plans for dinner?

Buffet? _____

Plated? _____

Meal





P.O. Box 401, Golden BC, V0A 1H0
Tel: 250.344.7490 Fax: 1.888.543.1096 E-mail: info@heathermountainlodge.com